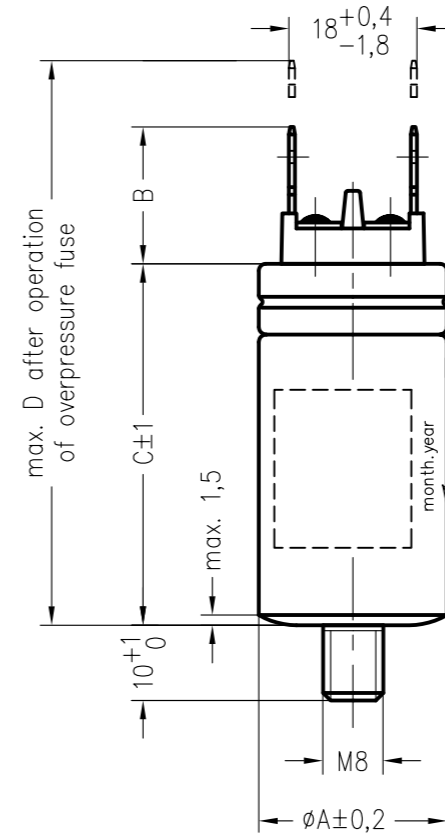


BSH mat. no.	Hydra ID	Hydra description	Cn [μ F]	A	B	C	D	marking color
9000537993	4207 127	MAB MKP 1/500/373	1	25	18,2 ⁺² ₀	48	75	black
9000537992	4207 128	MAB MKP 1,5/500/373	1,5	25	18,2 ⁺² ₀	48	75	black
9000937207	4207 461	MAB MKP 6,5/500/42	6,5	30	17,2 ⁺² ₀	68	94	black
9000033975	4206 485	MAB MKP 7,5/500/1198	7,5	30	17,2 ⁺² ₀	78	104	black
9000683852	4207 345	MAB MKP 8/500/42	8	30	17,2 ⁺² ₀	78	104	black
9000731017	4207 318	MAB MKP 8,5/500/1380	8,5	30	17,2 ⁺² ₀	78	104	black
9000470046	4207 209	MAB MKP 9/500III/42	9	30	17,2 ⁺² ₀	78	104	black
9000865664	4207 438	MAB MKP 15/500I/1	15	35	12,5 \pm 1,5	98	120	black
9000879371	4207 457	MAB MKP 20/500II/42	20	35	12,5 \pm 1,5	98	120	red
9000333254	4207 131	MAB MKP 25/500/42	25	40	12,5 \pm 1,5	98	120	black



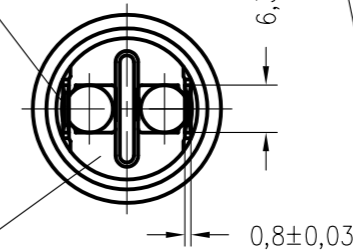
Identification - parts
Protected capacitors (P2, AL-case) produced in Hydra CZ/VN are visibly marked for easy identification on each capacitors:

month year no. of test. machine
02 16 4
24 SI 113
day workers no.

month year no. of test. machine
02 16 2
24 VN 22
day workers no.

Marking for Production in Vietnam: marked "VN"

single tags, tinned $\geq 3\mu$ m
A 6,3x0,8 DIN 46244



plastic cover
inflammability acc. to UL 94 V-0

UL requested

printing - marking color see table

MAB MKP 1/500/373
MKP 1 μ F \pm 5%
420V AC 30000h/KI A
-25/85/21
50/60 Hz
Pflanzenöl
1
420V AC 3000h/KI A
470V AC 10000h/KI B
EN 60252-1 -25/85/21
450VAC 60Hz -25/+85°C
PROTECTED 10.000 AFC
cRUus No.190
9000537993

MAB MKP 1,5/500/373
MKP 1,5 μ F \pm 5%
420V AC 30000h/KI A
-25/85/21
50/60 Hz
Pflanzenöl
1,5
420V AC 3000h/KI A
470V AC 10000h/KI B
EN 60252-1 -25/85/21
450VAC 60Hz -25/+85°C
PROTECTED 10.000 AFC
cRUus No.190
9000537992

MAB MKP 6,5/500/42
MKP 6,5 μ F \pm 5%
420V AC 30000h/KI A
470V AC 10000h/KI B
500V AC 1000h/KI D
-25/85/21 50/60Hz
S2 CE
6,5
EN 60252-1
Pflanzenöl
9000937207
450VAC 60Hz -25/+85°C
PROTECTED 10.000 AFC
cRUus No.190

MAB MKP 7,5/500/1198
MKP 7,5 μ F \pm 5%
420V AC 30000h/KI A
470V AC 10000h/KI B
500V AC 1000h/KI D
-25/85/21 50/60Hz
S2 CE
7,5
EN 60252-1
Pflanzenöl
9000033975
450VAC 60Hz -25/+85°C
PROTECTED 10.000 AFC
cRUus No.190

MAB MKP 8/500/42
MKP 8 μ F \pm 5%
420V AC 30000h/KI A
470V AC 10000h/KI B
500V AC 1000h/KI D
-25/85/21 50/60Hz
S2 CE
8
EN 60252-1
Pflanzenöl
9000683852
450VAC 60Hz -25/+85°C
PROTECTED 10.000 AFC
cRUus No.190

MAB MKP 8,5/500/1380
MKP 8,5 μ F \pm 5%
420V AC 30000h/KI A
470V AC 10000h/KI B
500V AC 1000h/KI D
-25/85/21 50/60Hz
S2 CE
8,5
EN 60252-1
Pflanzenöl
9000731017
450VAC 60Hz -25/+85°C
PROTECTED 10.000 AFC
cRUus No.190

MAB MKP 9/500III/42
MKP 9 μ F \pm 5%
420V AC 30000h/KI A
470V AC 10000h/KI B
500V AC 1000h/KI D
-25/85/21 50/60Hz
S2 CE
9
EN 60252-1
Pflanzenöl
9000470046
450VAC 60Hz -25/+85°C
PROTECTED 10.000 AFC
cRUus No.190

MAB MKP 15/500I/1
MKP 15 μ F \pm 5%
420V AC 30000h/KI A
470V AC 10000h/KI B
500V AC 1000h/KI D
-25/85/21 50/60Hz
S2 CE
15
EN 60252-1
Pflanzenöl
9000865664
450VAC 60Hz -25/+85°C
PROTECTED 10.000 AFC
cRUus No.190

MAB MKP 20/500II/42
MKP 20 μ F \pm 5%
420V AC 30000h/KI A
470V AC 10000h/KI B
500V AC 1000h/KI D
-25/85/21 50/60Hz
S2 CE
20
EN 60252-1
Pflanzenöl
9000879371
450VAC 60Hz -25/+85°C
PROTECTED 10.000 AFC
cRUus No.190

MAB MKP 25/500/42
MKP 25 μ F \pm 5%
420V AC 30000h/KI A
470V AC 10000h/KI B
500V AC 1000h/KI D
-25/85/21 50/60Hz
S2 CE
25
EN 60252-1
Pflanzenöl
9000333254
450VAC 60Hz -25/+85°C
PROTECTED 10.000 AFC
cRUus No.190

		Freimasstoleranzen	Oberflaechen	Masstab: 1:1 (für Typ 25x48)
				Werkstoff:
		Datum	Name	MKP-SI-Motorkondensator MAB MKP Cn/500xx/Index
		Bearb. 22.7.2014	Chrtk	
		Gepr.		
		Norm.		464.175 676.TD
03	0128/17	2.10.	Chr	
02	0071/16	11.04.	Chr	
01	0025/16	12.02.	Chr	
Zust.	Aenderung	Datum	Name	Blatt
		Urspr.:		Bl.
		Ers. f.:	Ers. d.:	

